



PC-based *audiometer*

- A Professional Office Experience
- Seamless Data Integration
- Improved Time Management
- Modern Technology and Innovative Design



leading diagnostic solutions



Equinox - PC-based Audiometer

- Modern design and unmatched flexibility



An included mounting bracket allows the Equinox to be mounted in a variety of locations – including inside an examination room or a sound booth.

Efficient audiometry

Imagine a faster and more efficient way of performing audiometry. The functionality of the Equinox will make it a welcome and integral part of your daily routine, and the elegant design makes it a welcome addition to your office.

Keep your desk clear and free of paperwork by using the AC440 database - compatible with NOAH or the Interacoustics database OtoAccess™. Store your patient journals and audiograms for quick retrieval and professional reports. You can even integrate records with the export function via “XML files” to your office electronic medical records system.



For the feel and control of a traditional audiometer, a dedicated keyboard is available. This optional unit incorporates easily programmable buttons allowing for greater flexibility.

PC-based audiometry

With the help of advanced PC technology, you can place the Equinox inside a soundbooth and run the tests from outside the booth.

The USB cable connects from the hardware to your PC. This eliminates the need for most patch cords, reducing clutter and increasing reliability. The dedicated wall-mount design allows for flexible placement of your new audiometer.

The design of the Equinox allows you to replace outdated, bulky machinery with an attractive solution helping you to lift the impression of your clinic to a new level.



Full-featured clinical audiometer with AC440

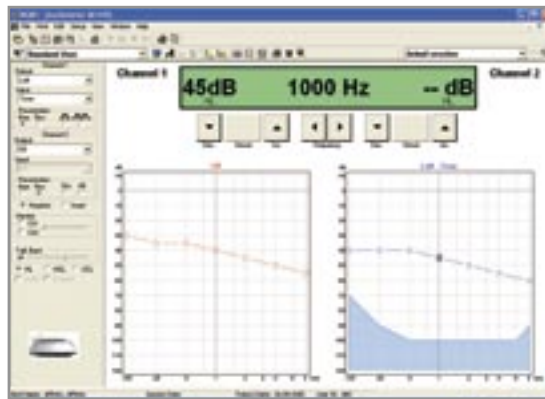
Used with the AC440 audiometry software, you get a full two-channel clinical audiometer.

The AC440 software includes all the traditional clinical testing capabilities such as air-bone-speech, but when combined with the technology of a PC you get the unprecedented flexibility to use the standard test protocols or customize your own – choose which tests you run and in what order, set your levels, make short-cut keys and save your settings as your own personal profile. In fact, each user can have a unique procedure.

Full integration

The Equinox AC440 is a PC-based unit with a central database. All client data can be saved directly to NOAH or Interacoustics' own OtoAccess™ database during the audiometric evaluation.

The audiometric software can be operated by the PC keyboard, mouse or by the dedicated audiometer keyboard. This optional keyboard provides the feel and control of a traditional audiometer while still providing the advantages of a PC-based system.



The AC440 audiometry screen.

- A Professional Office Experience
- Seamless Data Integration
- Improved Time Management
- Modern Technology and Innovative Design



General Technical Specifications

Standards:

Safety: EN 60601-1, Class I, Type B, UL 2601-1, CAN/CSA-C22.2 No. 601.1-M90, EN 60601-1-1.
EMC: EN 60601-1-2.

Medical CE-mark:

The CE-mark indicates that Interacoustics A/S meets the requirements of the Annex II of the Medical Device Directive 93/42/EEC. Approval of the quality system is made by TÜV – identification no. 0123.

Computer Communication:

Built-in USB1.1 computer interface.
 Optical isolation available.

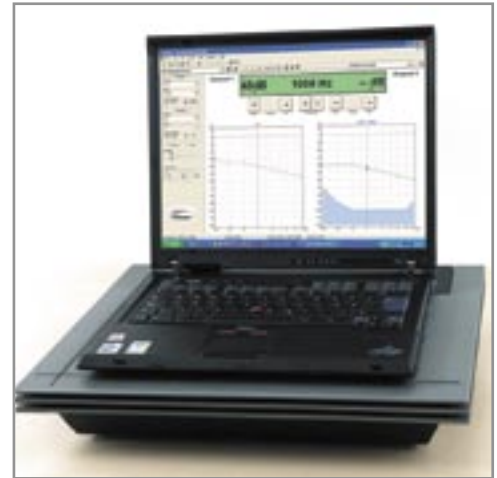
PC requirements:

Processor/clock speed: Pentium 4, 800 MHz
 System RAM: 128 MB
 Screen Resolution: 800 x 600
 Windows 98 SE/2000/ XP/ME

Construction:

Weight: 5.1 kg / 11.3 lbs.

Dimensions: LxWxH: 37x43,5x7,7 cm / 14.5x17x3 inches.



Technical Specifications - AC440 Audiometry Module

Audiometer Standards:

Tone: EN60645-1/ANSI S3.6 Type 1
 Speech: EN60645-2/ANSI S3.6 Type A or A-E.

Calibration:

AC: ISO389-1, ISO389-2.
 BC: ISO389-3.

Maximum Hearing Levels:

Hz	AC	AC	BC	NB	Ext.FF
	dBHL	dBHL	dBHL	dBHL	dB SPL
	TDH39	EAR-Tone5A	B71	TDH39	
125	90	95		75	80
250	110	100	45	95	95
500	120	110	65	110	100
750	120	120	70	110	105
1000	120	120	70	110	105
1500	120	120	70	110	105
2000	120	120	75	110	105
3000	120	120	80	110	110
4000	120	120	80	110	110
6000	120	105	50	110	105
8000	110	100	50	100	85

Extended Range Function:

If not activated, the AC output will be limited to 20 dB below maximum output.

Input:

Tone, Warble Tone, CD1, CD2, Mic1, Mic2, NBN, Wave Files.

Masking Stimulus:

Narrow Band Noise, White Noise or Speech Noise.

Outputs:

AC left, AC right, BC left, BC right, insert phones left, insert phones right, insert masking, FF1, FF2.

Transducers:

TDH39 Audiometric headset.
 EAR-Tone 5A Insert phones (optional).
 EAR-Tone 3A Insert phones (optional).
 HDA200 Audiometric headset (optional).
 HDA280 Audiometric headset (optional).
 KOSS R80 High Freq. headset (optional).
 B71 Bone conductor.

Tone Presentation:

Manual or Reverse. Single or multiple pulses.

Patient communication:

Talk Forward and Talk Back.

Patient signal:

One or two (optional) hand held push button.

Free Field:

Built-in 2x10W amplifier or
 External, optional amplifier 2x12W (AP12) or
 External, optional amplifier 2x70W (AP70).

Monitor:

Channel 1 and Channel 2.

Storing capability:

Tone audiogram: dB HL, MCL, UCL, binaural, aided.
 Speech Audiogram: SRT, SDS1, SDS2, SDS3, MCL, UCL, aided, unaided, binaural.

Compatible Software:

NOAH 3, OtoAccess™ Interacoustics database.

Included Parts:

AC440 Installation CD
 TDH39 Audiometric Headset
 B71 Bone Conductor
 APS2 Patient Response Button
 Standard USB Cable
 Wall Mount Bracket
 Soft Bag
 Power Cable 120 or 230V
 Operation and Multilingual CE Manual

Optional Parts:

Audiometer Keyboard with live voice mic.
 EAR-Tone5A Audiometric Headset
 HDA200 Audiometric Headset
 HDA280 Audiometric Headset
 KOSS R80 high frequency headset
 CIR22 Insert Masking Earphones
 Audicup Enclosures
 UCO15 Optical USB Extension Cable

MTH400 Headset
 EMS400 Talkback Microphone
 MTH400M Monitor Headset/Boom Mic.
 AP12 Power Amplifier 2x12 Watt
 AP70 Power Amplifier 2x70 Watt
 ALS7 Loudspeaker
 AFC8 Sound Cabin Installation Panel
 Value-add modules: SFH440, MLD440, HF440, HLS440, MHA440, MF440

Interacoustics A/S

Phone: +45 6371 3555
 Fax: +45 6371 3522
 E-mail: info@interacoustics.com
 Web: www.interacoustics.com
 Mail: Interacoustics A/S
 DK-5610 Assens, Denmark

Sales and Service in your area:

