

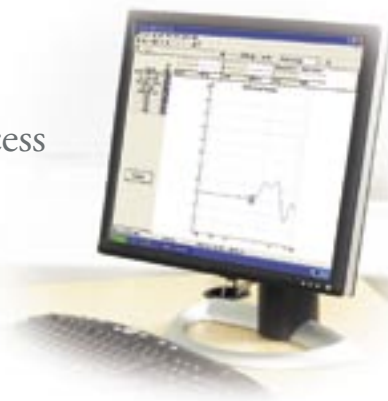
Affinity - for Hearing Aid Dispensing
- Efficient Audiometry and Hearing Aid Testing



Affinity

your new platform

- Make your work day easier
- Have more time for the sales and counseling process
- Attract more customers



leading diagnostic solutions



Affinity - Your New Platform

- Efficient audiometry and hearing aid testing

The future is today

Make your work day easier by using a PC-based modular dispensing tool with unlimited testing protocols and visual counseling tools. Considering the rapid development of hearing aids, this PC-based tool gives the professional dispenser options to adjust to changing needs and trends in the future of dispensing.

Spend more time in the sales/counseling process. Easy and quick data storage using NOAH3 or IaBaseII software ensures that your valuable work and client data is safely stored and is quickly accessed by other modules for further use in the dispensing process.

Attract more customers by using a highly reliable and attractively designed instrument with a small footprint. Use the efficient sales and counseling tools to provide the optimal fitting or adjustment to the Hearing Aid user and differentiate your clinic.

Full Integration



NOAH Link
– the modern wireless successor of HiPro
– can be integrated with the Affinity for convenient hearing aid programming.

Meet your customers

The Affinity offers the flexibility of easy transportation in a dedicated carrying case accommodating the Affinity and its accessories.



The Interacoustics Affinity can be run directly from your own PC or laptop under NOAH 3.

Audiometry

The AC440 module provides you with a full-featured clinical audiometer. Test operation can be conducted from a PC or on an optional dedicated audiometer keyboard.

Use the intuitive standard test protocols or use the flexibility of designing your own.

The audiometric tests can be saved and used in hearing aid fitting sessions or printed to a professional one page report.



Real Ear Measurement

For fitting new hearing aids or trouble-shooting them, the REM440 Real Ear Measurement module is an indispensable tool for verifying your work. The REM440 software gives you the tools to carry out real ear testing conveniently and with high precision. The hinged main speaker is designed to provide easy stimulation when performing real ear measurement.

Visible Speech

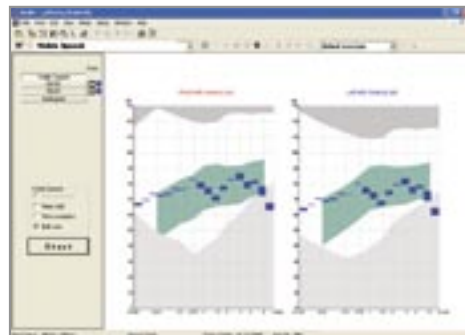
When it comes to sales tools, the VSP440 Visible Speech module shows hearing aid customers what the hearing aid offers in terms of audibility compared to the non-amplified ear. It allows you to make a convincing case for the sale of the hearing aid in a way that your customer can easily understand – and hear. Not only can your customers experience the difference hearing aids can make, but their friends and family can appreciate the benefits as well.



Hearing Instrument Testing

Test protocols in the HIT440 Hearing Instrument Test module are pre-loaded for quick and easy to use clinical set up and can be customized to meet your personal testing needs. Perform evaluations on both traditional and digital hearing aids with advanced test paradigms or manufacturer-specific protocols.

The built-in hearing aid test box holds three independent speakers that allow not only testing of normal hearing aid performance, but also convenient testing of directional microphones. A built-in magnetic loop allows for testing telecoil performance as well.



The Visible Speech screen.



- Make your work day easier
- Have more time for the sales and counseling process
- Attract more customers

General Technical Specifications

Standards:

Safety: EN 60601-1, Class I, Type B, UL 2601-1, CAN/CSA-C22.2 No. 601.1-M90, EN 60601-1-1. **EMC:** EN 60601-1-2.

Medical CE-mark:

The CE-mark indicates that Interacoustics A/S meets the requirements of the Annex II of the Medical Device Directive 93/42/EEC. Approval of the quality system is made by TÜV – identification no. 0123.

Computer Communication:

Built-in USB1.1 computer interface. Optical isolation available.

NOAH: 3.0.

PC Minimum Requirements:

Processor/clock speed: 800 MHz Pentium 3 or better. System RAM: Minimum 128 MB
Screen Resolution: Minimum 800 x 600
Harddisk space: Minimum 500 MB free disk space. Operating System: Windows 98 SE/2000/ XP/ME.

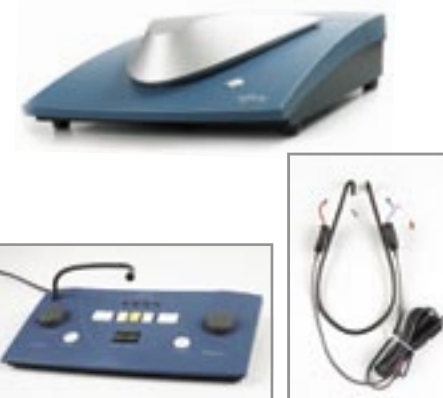
Applications:

Hearing Instrument Testing HIT440, Real Ear Measurement REM440 and Audiometry AC440. Optional Visible Speech software VSP440 available for REM440.

Construction: Painted metal cabinet bottom and moulded plastic top.

Weight: 5.5 kg / 12.1 lbs.

Dimensions: LxWxH: 42x38x15 cm / 16.5x15x5.5 inches.



Features of the AC440 module:

- Air bone and speech
- Full patient communication
- Dedicated audiometry keyboard
- Individual user profiles
- Preprogrammed tests
- Individualized printouts
- Comparison to previous audiograms

Features of the HIT440 module:

- Preprogrammed test protocols
- ANSI, IEC standard tests
- Tests digital hearing aids
- Real speech as stimulus
- Tests directional microphones
- Easy upgrade with new tests
- Customized printouts

Features of the REM440 module:

- Simultaneous test of both ears
- Easy to use probe microphones
- Functions together with Fitting modules
- Tone, Noise or Speech stimuli included
- Handles live speech and environmental sounds
- Target curve calculations
- Individualized printouts
- Optional Visible Speech Software VSP440



The Affinity holds extensive possibilities for upgrading to other functions that you may need in the future.

Included Parts AC440:

Affinity AC440 CD
TDH39 Audiometric Headset
B71 Bone Conductor
APS2 Patient Response Button
Standard USB Cable
Power Cable 120 or 230V
Operation and Multilingual CE Manual

Included Parts HIT440:

Affinity HIT440 CD
2CC coupler with microphone and adaptors for ITE, BTE and Body Style HA
Coupler seal wax
Reference Microphone
Standard USB Cable, Power Cable 120 or 230V
Operation and Multilingual CE Manual

Included Parts REM440:

Affinity REM440 CD
IHM60 In-Situ headset with probe microphone and reference microphone (double)
IGT50 Insertion Gain Tubes 36 pcs.
Standard USB Cable
Power Cable 120 or 230V
VSP440 Visible Speech Software (optional)
Operation and Multilingual CE Manual

83003401-5 - 07/2006

Interacoustics A/S

Phone: +45 6371 3555
Fax: +45 6371 3522
E-mail: info@interacoustics.com
Web: www.interacoustics.com
Mail: Interacoustics A/S
DK-5610 Assens, Denmark

Sales and Service in your area:

